

## Central heating zone manifold C 60 - DN 25

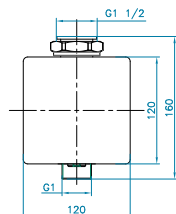
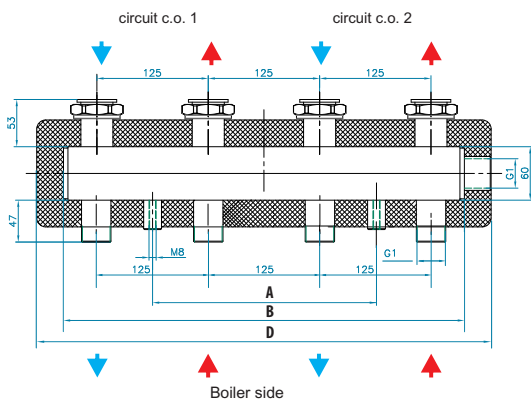


Two-chamber steel manifold **C 60 DN 25** - 2, 3 or 4 heating circuits was created to simplify installation of pump groups. The factory manifold is equipped with EPP insulation. In addition, the manifold has an output DN 20 on the return side for connecting pressure vessel and the output DN 25 on the power supply for connecting the safety group. On request, the manifold can be equipped with a set of mounting brackets on the wall **DELTA** (see bushings M8).

### Technical data:

Raw material:	steel ST 37.1
Max pressure:	8 bar
Max temp.:	110°C
Max. power:	45 kW ( $\Delta T$ 20°C)
Axle spacing:	Installation side: 125 mm Boiler side: 125 mm
Connections:	Installation side: Nut 1 1/2" F Boiler side: 1" M
Insulation material:	EPP black 40 g/l

Type	Catalog number
Central heating zone manifold <b>C 60 2F - DN 25</b> with insulation	616011
Central heating zone manifold <b>C 60 3F - DN 25</b> with insulation	616012
Central heating zone manifold <b>C 60 4F - DN 25</b> with insulation	616013
Wall bracket kit <b>DELTA</b> for zone manifolds	606015
Check valve for pump group with mixing valve for manifolds <b>C 60, C 70, CN 70, C 100, CN 100 - DN 25</b>	606031



number of heating circuits	A	B	C	D
2	250	460	X	520
3	500	695	307	755
4	700	945	432	1005

